



山东领凡环保科技有限公司
Shandong Lingfan Technology Co., Ltd.



Product Certification



◀ About us

Shandong Lingfan Technology Co., Ltd. is a leading manufacturer and exporter of high-quality refrigeration equipment for commercial, kitchen, and supermarket use. Based in Binzhou City, Shandong Province, China's kitchen equipment hub, we operate two advanced production facilities, enabling us to deliver innovative and reliable solutions globally.

Our product range includes 10 categories, 37 series, and 165 models, featuring upright display coolers, multi-deck chillers, meat displays, island freezers, and cold storage rooms. Most products meet international standards like CE, CB, ROHS, and are ISO9001, Environmental, and Occupational Health and Safety certified. We also provide OEM/ODM services to customize products for specific needs.

Our products are well-regarded domestically and exported to over 20 countries, including Southeast Asia, Australia, Europe, the Middle East, and North America, reflecting our commitment to quality and innovation. Equipped with advanced machinery like Nisshinbo, Yawei, and Amada Trulaser, we prioritize sustainability by using eco-friendly refrigerants and foaming agents. Our skilled R&D, metal workshop, and quality control teams ensure top-tier performance and reliability.

Guided by our core values, we aim to lead the global commercial cold chain industry into a new era of innovation. We welcome global partners to collaborate and shape the future of refrigeration technology.





Economic series	LFLC-290A
Dimension (mm)	600*560*1970
Volume (L)	300L
Cooling system	Static Cooling /Air Cooling
Temperature	2-8°C
Refrigerant	R290a
Rated/Frequency	220V-240V/50Hz-60Hz/120V-100V/50Hz-60Hz
Fan	YES / NO

Economic series	LFLC-660A
Dimension (mm)	1200*560*1970
Volume (L)	650L
Cooling system	Static Cooling /Air Cooling
Temperature	2-8°C
Refrigerant	R290a
Rated/Frequency	220V-240V/50Hz-60Hz/120V-100V/50Hz-60Hz
Fan	YES / NO



Economic series	LFLC-1010A
Dimension (mm)	1800*560*1970
Volume (L)	1000L
Cooling system	Static Cooling /Air Cooling
Temperature	2-8°C
Refrigerant	R290a
Rated/Frequency	220V-240V/50Hz-60Hz/120V-100V/50Hz-60Hz
Fan	YES / NO



Economic series	LFLC-288A	LFLC-338A
Dimension (mm)	600*630*1750	600*630*1960
Volume (L)	250L	330L
Cooling system	Static Cooling /Air Cooling	
Temperature	2-8°C	
Refrigerant	R290a	
Rated/Frequency	220V-240V/50Hz-60Hz/120V-100V/50Hz-60Hz	
Fan	YES / NO	

Economic series	LFLC-388A	LFLC-608A
Dimension (mm)	1000*630*1960	1200*630*1960
Volume (L)	530L	650L
Cooling system	Static Cooling /Air Cooling	
Temperature	2-8°C	
Refrigerant	R290a	
Rated/Frequency	220V-240V/50Hz-60Hz/120V-100V/50Hz-60Hz	
Fan	YES / NO	



Economic series	LFLC-1138A
Dimension (mm)	1800*630*1960
Volume (L)	1050L
Cooling system	Static Cooling /Air Cooling
Temperature	2-8°C
Refrigerant	R290a
Rated/Frequency	220V-240V/50Hz-60Hz/120V-100V/50Hz-60Hz
Fan	YES / NO

NOISE-FREE COMPRESSOR: Equipped with a reliable Wanbao compressor and DC fans, it ensures quiet operation, ideal for retail or commercial spaces.

SPACIOUS DESIGN: Adjustable chrome shelves maximize storage and organization.

ACCURATE TEMPERATURE CONTROL: Features advanced controls, including auto-defrost, temperature warnings, and energy management for optimal storage.

Customizable temperature control: The single-temperature cooling system allows precise adjustment between 2-8° C, ensuring optimal freshness.



Digital Controller



Fans



Adjustable shelf



Universal wheel





Classics Series	LFLC-288B	LFLC-338B
Dimension (mm)	600*630*1750	600*630*1960
Volume (L)	250L	330L
Cooling system	Static Cooling /Air Cooling	
Temperature	2-8°C	
Refrigerant	R290a	
Rated/Frequency	220V-240V/50Hz-60Hz/120V-100V/50Hz-60Hz	
Fan	YES / NO	

Classics Series	LFLC-388B	LFLC-608B
Dimension (mm)	1000*630*1960	1200*630*1960
Volume (L)	530L	650L
Cooling system	Static Cooling /Air Cooling	
Temperature	2-8°C	
Refrigerant	R290a	
Rated/Frequency	220V-240V/50Hz-60Hz/120V-100V/50Hz-60Hz	
Fan	YES / NO	

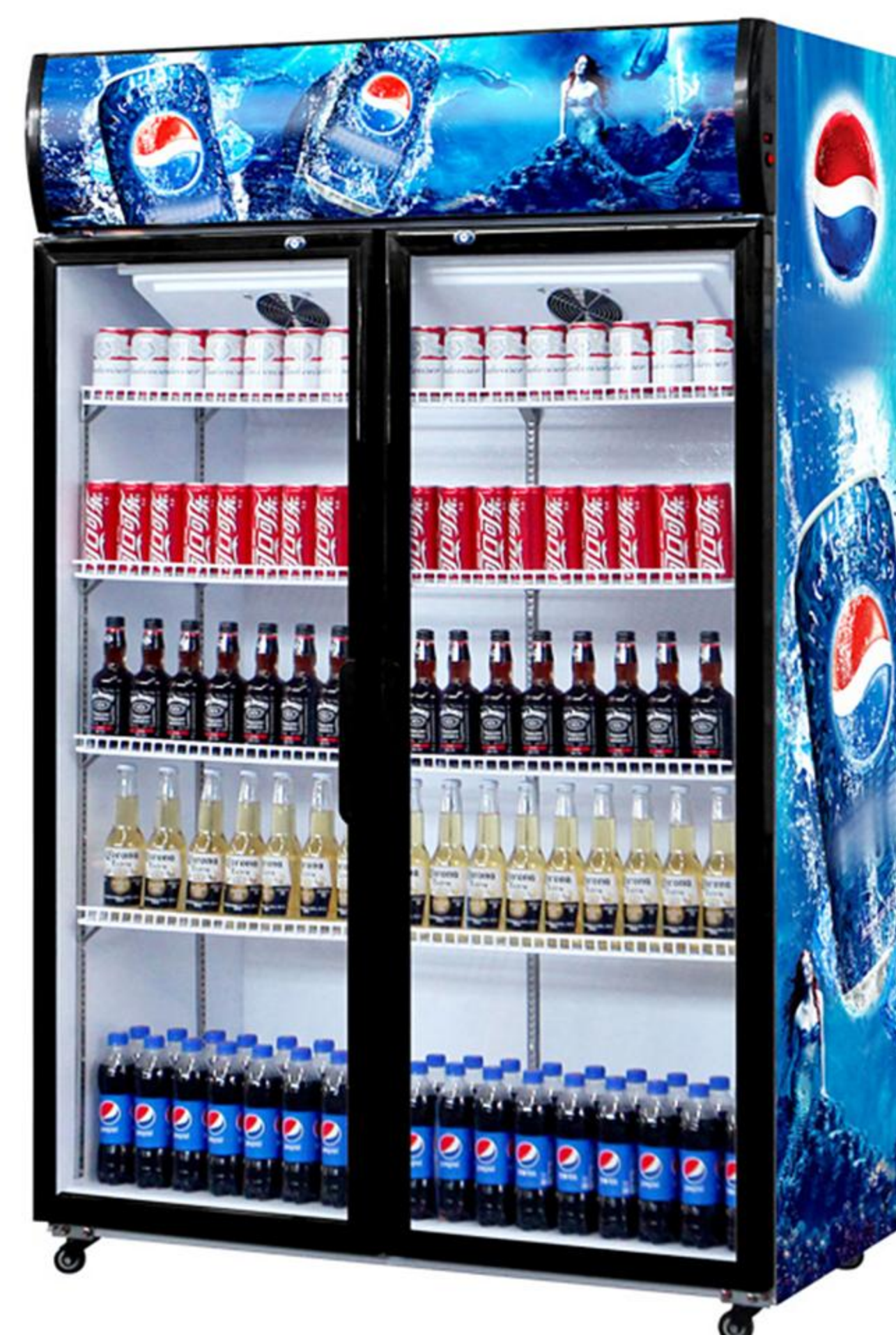


Classics Series	LFLC-1138B
Dimension (mm)	1800*630*1960
Volume (L)	1050L
Cooling system	Static Cooling /Air Cooling
Temperature	2-8°C
Refrigerant	R290a
Rated/Frequency	220V-240V/50Hz-60Hz/120V-100V/50Hz-60Hz
Fan	YES / NO



Economic series	LF2023-UA1
Dimension (mm)	600*600*1960
Volume (L)	400L
Cooling system	Static Cooling /Air Cooling
Temperature	2-8°C
Refrigerant	R290a
Rated/Frequency	220V-240V/50Hz-60Hz/120V-100V/50Hz-60Hz
Fan	YES

Economic series	LF2023-UA2
Dimension (mm)	1200*600*1960
Volume (L)	900L
Cooling system	Static Cooling /Air Cooling
Temperature	2-8°C
Refrigerant	R290a
Rated/Frequency	220V-240V/50Hz-60Hz/120V-100V/50Hz-60Hz
Fan	YES



Economic series	LF2023-UA3
Dimension (mm)	1800*600*1960
Volume (L)	1200L
Cooling system	Static Cooling /Air Cooling
Temperature	2-8°C
Refrigerant	R290a
Rated/Frequency	220V-240V/50Hz-60Hz/120V-100V/50Hz-60Hz
Fan	YES

Wine cabinet ▶



● LF-420A

● LF-850A

● LF-1350A

● LF-1650A

Model	LF-420A	LF-850A	LF-1350A	LF-1650A
Dimension (mm)	600*650*2000	1200*650*2000	1800*650*2000	2250*650*2000
Volume (L)	420L	850L	1350L	1650L
Cooling system	Air Cooling	Air Cooling	Air Cooling	Air Cooling
Temperature	2-8°C	2-8°C	2-8°C	2-8°C
Refrigerant	R290a	R290a	R290a	R290a
Rated/Frequency	220V-240V/50Hz-60Hz	220V-240V/50Hz-60Hz	220V-240V/50Hz-60Hz	220V-240V/50Hz-60Hz
Fan	YES / NO	YES / NO	YES / NO	YES / NO

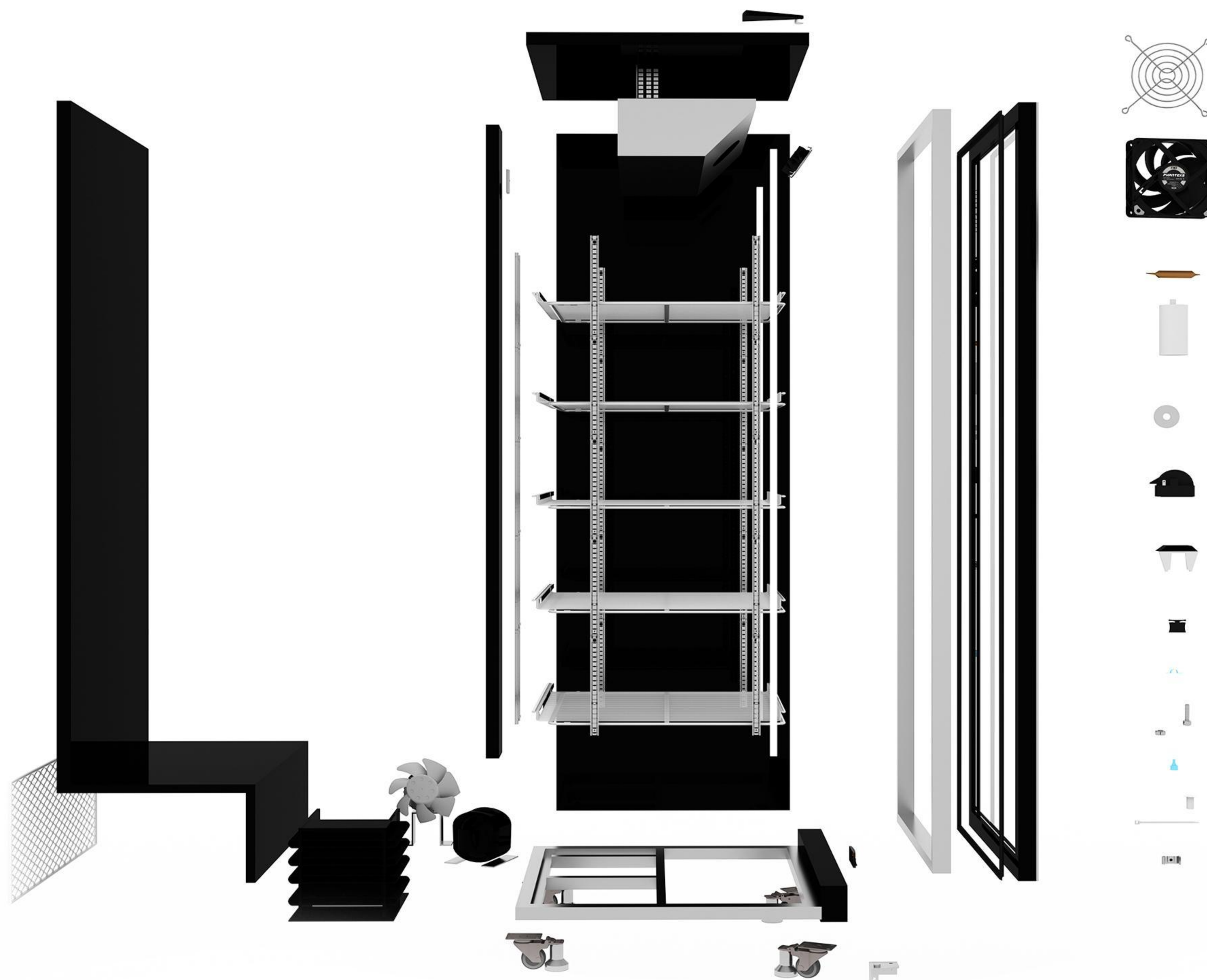
***Large Capacity and Energy Efficiency:** This commercial upright wine cooler boasts a spacious capacity, perfect for convenience stores to stock a wide variety of beverages. It operates with the eco-friendly refrigerant R290a and is designed for energy efficiency.

***Temperature Control and Digital Thermostat:** The product features a digital thermostat, allowing for precise temperature control between 2~8 degrees Celsius, ideal for storing a wide range of beverages at the optimal temperature.

***Durable and Safety Features:** The swing door is made of tempered glass with a heating wire for added safety and durability, ensuring the longevity of the product.

***Easy Maintenance and Frost-Free Operation:** This commercial refrigerator comes with a frost-free defrosting system, minimizing maintenance needs and reducing the risk of frost buildup.

***Customizable and Reliable:** Available in a MOQ of 10 sets, this product is suitable for convenience stores and other businesses looking for a reliable and customizable beverage display solution, as requested by the user.



- * **Low energy consumption:** The products use imported compressors, fast refrigeration, and low energy consumption, far lower than the energy consumption of similar products.
- * **Design:** Adopting the upper unit design, getting rid of the traditional lower unit design, the appearance is more exquisite and the atmosphere will be larger, the upper unit is convenient for heat dissipation and the cooling effect is better.
- * **Occasion:** Suitable for shopping malls, supermarkets, and other commercial occasions.



Double aluminum series ▶



● LFDA-420



● LFDA-850



● LFDA-1350

Model	LFDA-420	LFDA-850	LFDA-1350
Dimension (mm)	600*630*1960	1200*630*1960	1800*630*1960
Volume (L)	420L	850L	1350L
Cooling system	Air Cooling	Air Cooling	Air Cooling
Temperature	2-8°C	2-8°C	2-8°C
Refrigerant	R290a	R290a	R290a
Rated/Frequency	220V-240V/50Hz-60Hz	220V-240V/50Hz-60Hz	220V-240V/50Hz-60Hz
Fan	YES / NO	YES / NO	YES / NO





SD-625A



SD-1260A



SD-1880A



SD-2506A

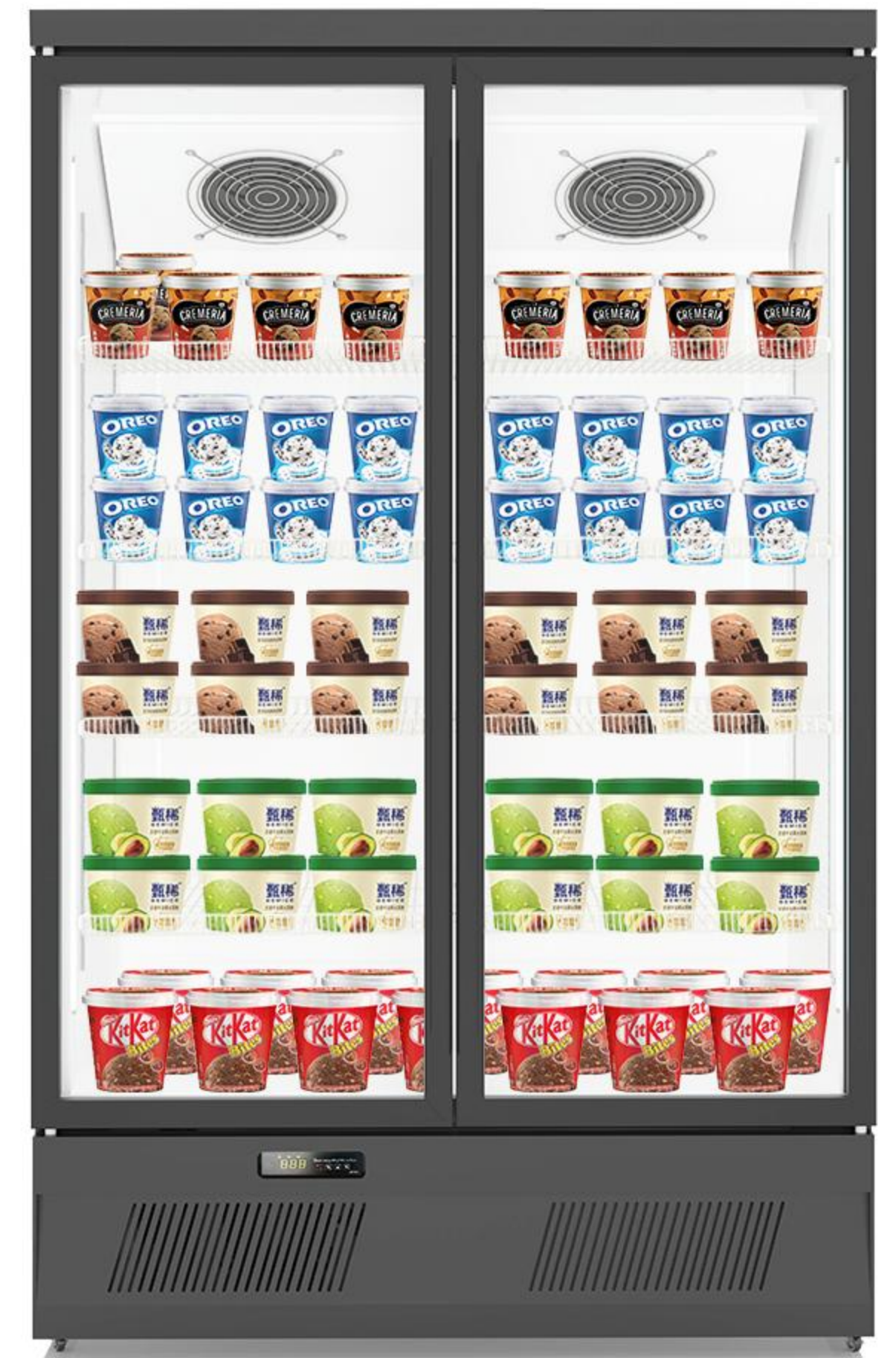


Deluxe bottom single door freezer SD-625A

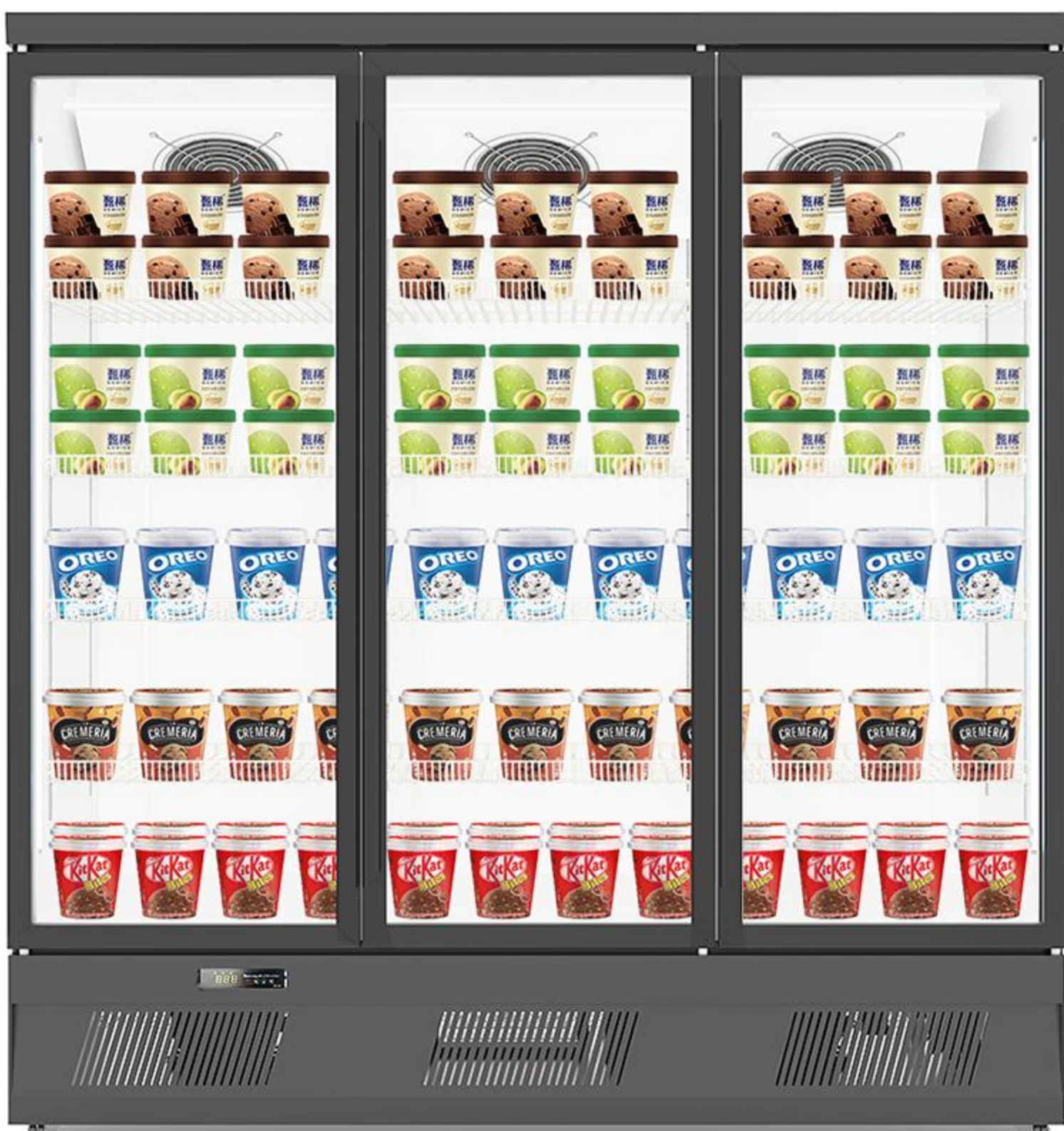
Voltage	220V-240V/50Hz-60Hz/100V-110V/50Hz-60Hz
Power	735 W
Product size	625*720*2000mm
Cooling system	Air Cooling
Volume (L)	420L
Temperature	-18~-22°C
Colour	White, black, gray

Deluxe bottom double door freezer SD-1260A

Voltage	220V/50Hz
Power	1472W
Product size	1260*720*2000mm
Cooling system	Air Cooling
Volume (L)	950L
Temperature	-18~-22°C
Colour	White, black, gray



Deluxe bottom three door frozen SD-1880A



Voltage	220V/50Hz
Power	2198W
Product size	1880*720*2000mm
Cooling system	Air Cooling
Volume (L)	1450L
Temperature	-18~-22°C
Colour	White, black, gray



Deluxe bottom three door frozen SD-2506A

Voltage	220V/50Hz
Power	2198W
Product size	2506*705*2000mm
Cooling system	Air Cooling
Volume (L)	2000L
Temperature	-18~-22°C
Colour	White, black, gray





Light box freezer SD--620

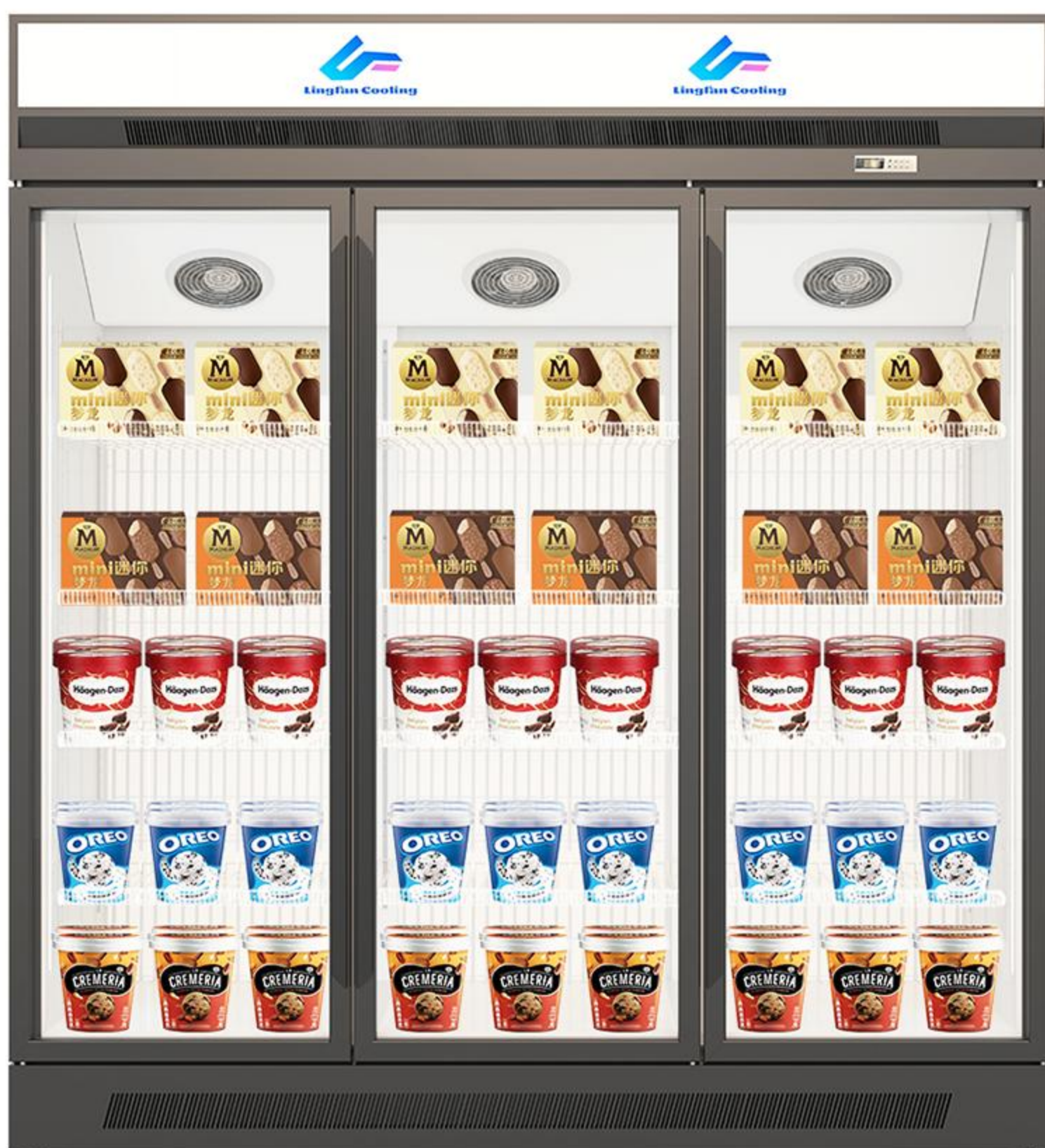
Voltage	220V-240V/50Hz-60Hz/100V-110V/50Hz-60Hz
Power	350 W
Product size	620*705*2100mm
Cooling system	Air Cooling
Volume (L)	410L
Temperature	-18~-22°C
Colour	White, black, gray

Light box freezer SD--1260

Voltage	220V-240V/50Hz-60Hz/100V-110V/50Hz-60Hz
Power	410 W
Product size	1260*705*2100mm
Cooling system	Air Cooling
Volume (L)	960L
Temperature	-18~-22°C
Colour	White, black, gray



Light box freezer SD-1880



Voltage	220V-240V/50Hz-60Hz/100V-110V/50Hz-60Hz
Power	650 W
Product size	1880*705*2100mm
Cooling system	Air Cooling
Volume (L)	1480L
Temperature	-18~-22°C
Colour	White, black, gray



Light box freezer SD--2506

Voltage	220V-240V/50Hz-60Hz/100V-110V/50Hz-60Hz
Power	750 W
Product size	2506*705*2100mm
Cooling system	Air Cooling
Volume (L)	2000L
Temperature	-18~-22°C
Colour	White, black, gray

*Fan cycle: The air-conditioning inside the freezer is cooled by 360° circulation to accelerate the cooling and keep the food fresh. The inside does not freeze, the glass will not be fogged, and the perspective will be clearer.

*Thickened load bearing partition: No rust, stronger load-bearing capacity, a single layer can bear 30KG, and the layer frame will not be deformed.



Bottom machine series ▶



LFBM-1

LFBM-2

LFBM-3

LFBM-4

Upper machine series ▶



LFUM-1

LFUM-2

LFUM-3

LFUM-4

Model	LFBM/LFUM-1	LFBM/LFUM-2	LFBM/LFUM-3	LFBM/LFUM-4
Dimension (mm)	625*720*2000	1260*720*2000	1880*720*2000	2506*705*2100mm
Volume (L)	420L	950L	1450L	2000L
Cooling system	Air Cooling			
Voltage	220V-240V/50Hz-60Hz/100V-110V/50Hz-60Hz			
Colour	White, black, gray			
Temperature	2-8°C			
Fan	YES / NO			

Morandi color palette refrigerator



LFA-01

LFA-02

LFA-03

LFA-04

LFA-05

LFA-06

LFA-07

LFA-08

Macaron color series refrigerator



LFB-01

LFB-02

LFB-03

LFB-04

LFB-05

LFB-06

LFB-07

LFB-08

Upright glass door freezer

- *Cooling type:Fan cooling
- *Defrost system:Automatic(Heating element)
- *Compressor:Embraco/Danfoss
- *Shelves:6 PCS orbital type
- *Color:Out black,inner white
- *Door type:Three-glass tempered glass,self-closing
- *Interior light:LED
- *Temperature:-18 ° C to -23 ° C
- *Voltage:220 – 240 V / 50 Hz
- *Refrigerant:R290a
- *Controller:Carel/Dixell
- *volume:180L
- *Inner size:330*480*1150mm
- *Dimensions:450*600*1600mm



Bar Counter Cabinet



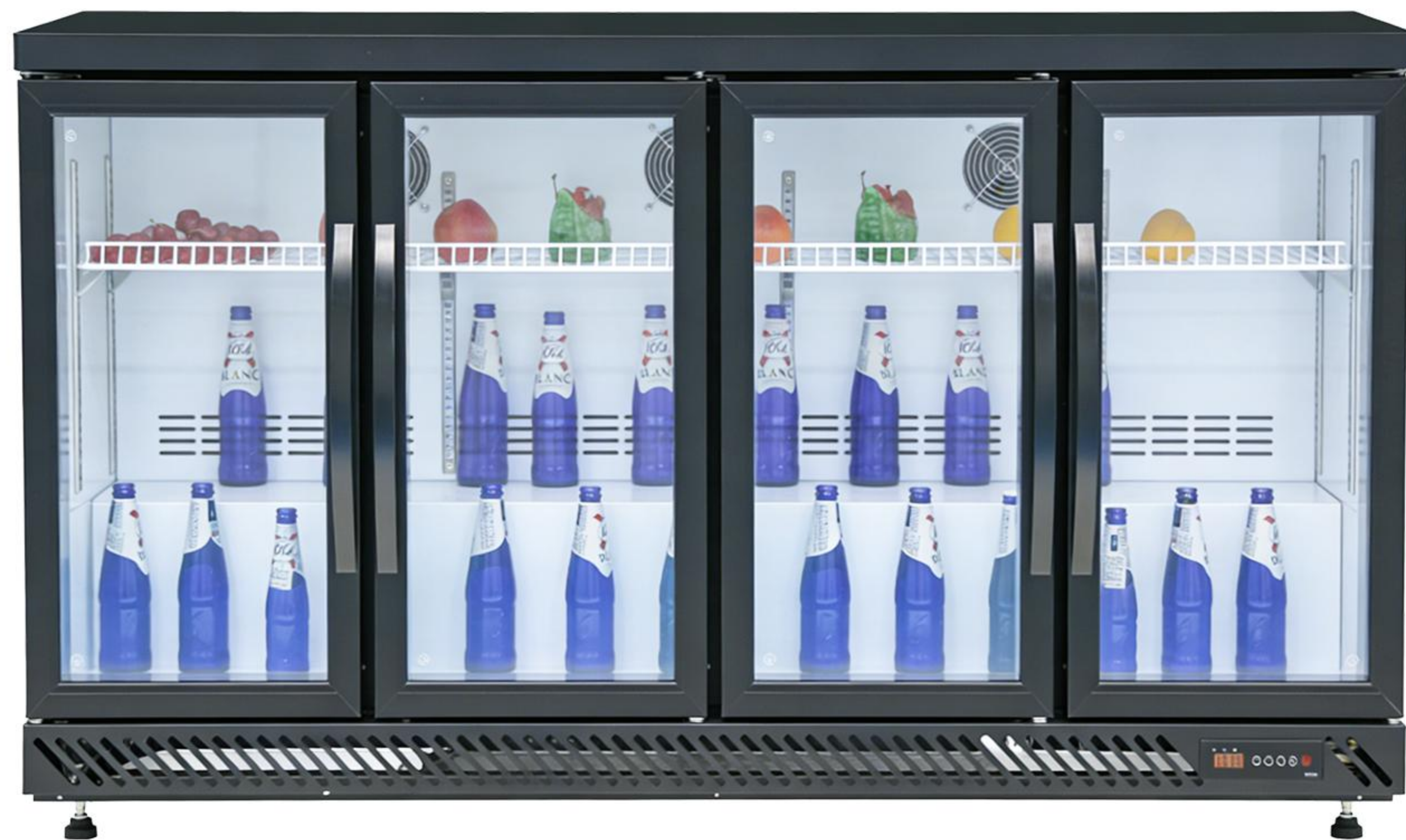
LFBC-90



LFBC-175



LFBC-275



LFBC-375

Product Name	Bar Counter Cabinet			
Model	LFBC-90	LFBC-175	LFBC-275	LFBC-375
Dimension (mm)	500*590*860mm	900*590*860mm	1360*590*860mm	1820*590*860mm
Temperature	+2~+8°C	+2~+8°C	+2~+8°C	+2~+8°C
Refrigerant	R600a	R290a	R290a	R290a
Rated/Frequency	220V-240V/50Hz-60Hz	220V-240V/50Hz-60Hz	220V-240V/50Hz-60Hz	220V-240V/50Hz-60Hz
Cooling system	Air Cooling	Air Cooling	Air Cooling	Air Cooling
Volume (L)	90L	175L	275L	375L



Stainless Steel Refrigerator



LFSS-3A



LFSS-2A



LFSS-2B



LFSS-2C



LFSS-3D

Model	Dimension W/D/H(mm)
LFSS-3A	1800*700/730/760*1960
LFSS-2A	1200*700/730/760*1960
LFSS-2B	630*700/730/760*1960
LFSS-2C	1200*700/730/760*1960
LFSS-3D	1800*700/730/760*1960

Stainless Steel Refrigerator



LFZM-1200



LFZM-1500/1800

Name	Model	Temperature	Dimension(mm)	Cooling system
Double temperature	LFZM-1200	2~8/0~-15	1200*800*2080	STATIC COOLING
Double temperature	LFZM-1500	2~8/0~-15	1500*800*2080	STATIC COOLING
Double temperature	LFZM-1800	2~8/0~-15	1800*800*2080	STATIC COOLING



Stainless Steel Work Table



LFWT-01



LFWT-02



LFWT-03



LFWT-04



LFWT-05



LFWT-06



LFWT-07

Dimension W/D/H(mm)

1200*600/700/800*800

1500*600/700/800*800

1800*600/700/800*800



Stainless Steel Refrigerator



● LFS-01a



● LFS-01b



● LFS-01c



● LFS-01d

Model	Dimension (mm)	Volume (L)	Door	Power (W)	Temperature
LFS-01a	600*705*1950	410L	one	195W	+4~-5
LFS-01b	600*705*1950	410L	two	195W	+4~-5
LFS-01c	600*705*1950	410L	one	263W	-3~-15
LFS-01d	600*705*1950	410L	two	263W	-3~-15



Stainless Steel Refrigerator



● LFS-02a

● LFS-02b

● LFS-02c

modle	LFS-02a	LFS-02b	LFS-02c
volume	920L	920L	920L
cooling temp	4~-5° C	-15~-5° C	-15~-5° C/4~-5° C
cooling system	Air cooling/Direct cooling	Air cooling/Direct cooling	Air cooling/Direct cooling
power	352W	412W	382W
size	1230*750*1950mm	1230*750*1950mm	1230*750*1950mm
Voltage	220v/110v (50hz-60hz)	220v/110v (50hz-60hz)	220v/110v (50hz-60hz)
Refrigerant	R290a	R290a	R290a



Stainless Steel Refrigerator



● LFS-03a



● LFS-03b

modle	LFS-03a	LFS-03b
volume	1380L	1380L
cooling temp	-15~-5° C/4~-5° C	-15~-5° C/4~-5° C
cooling system	Air cooling/Direct cooling	Air cooling/Direct cooling
power	632W	632W
size	1770*700*1950mm	1770*700*1950mm
Voltage	220v/110v (50hz-60hz)	220v/110v (50hz-60hz)
Refrigerant	R290a	R290a



Stainless Steel Glass Door Refrigerator



LFG-1



LFG-2



LFG-3

Product Name	Stainless Steel Glass Door Refrigerator		
Model	LFG-1	LFG-2	LFG-3
Dimension (mm)	630*760*1960	1200*760*1960	1800*760*1960
Temperature	+2~+8°C	+2~+8°C	+2~+8°C
Refrigerant	R290a	R290a	R290a
Rated/Frequency	110V 60Hz	110V 60Hz	110V 60Hz
Cooling system	Air Cooling	Air Cooling	Air Cooling
Material	S/S 201	S/S 201	S/S 201



Chest Freezer



● One Door



● Two Doors



● Three Doors

Model	LFBD/BC-350	LFBD/BC-450	LFBD/BC-550	LFBD/BC-650	LFBD/BC-750	LFBD/BC-950	LFBD/BC-1150	LFBD/BC-1650
Compact								
Dimension (mm)	1000*760*880	1200*760*880	1500*760*880	1800*760*880	2000*760*880	2000*900*880	2500*900*880	3100*1010*880
Cooling system	Direct Cooling	Direct Cooling	Direct Cooling	Direct Cooling	Direct Cooling	Direct Cooling	Direct Cooling	Direct Cooling
Temperature	-18~-23°C	-18~-23°C	-18~-23°C	-18~-23°C	-18~-23°C	-18~-23°C	-18~-23°C	-18~-23°C
Refrigerant	R290a	R290a	R290a	R290a	R290a	R290a	R290a	R290a
Volume (L)	255	327	433	540	610	738	954	1451
Rated/Frequency	220V-240V/50Hz-60Hz							

*Large Storage Capacity Spacious internal volume equipped with adjustable wire baskets for flexible product arrangement and storage.

*Wide Freezing Temperature Range Stable operating temperature from -18° C to -23° C, suitable for frozen meat, seafood, ice cream, and other frozen food products.

*Excellent Cooling Performance High-density polyurethane foam insulation helps maintain stable internal temperature and improves energy efficiency.

*User-Friendly Design 2 doors, ergonomic handles, and easy-to-clean interior surfaces improve daily operation and maintenance.

*The unique custom color makes it stand out among the many white options.

*Commercial Application Widely used in supermarkets, convenience stores, warehouse, kitchen, frozen food stores, and food distribution centers.



Chest Freezer ▶



Single Temperature Series ▶

Model	LFBD/BC-350	LFBD/BC-450	LFBD/BC-550	LFBD/BC-650	LFBD/BC-750	LFBD/BC-950	LFBD/BC-1150
Compact							
Dimension (mm)	1000*760*960	1200*760*960	1500*760*960	1800*760*960	2000*760*960	2000*900*960	2500*900*960
Cooling system	Direct Cooling	Direct Cooling	Direct Cooling	Direct Cooling	Direct Cooling	Direct Cooling	Direct Cooling
Temperature	-18~-23°C	-18~-23°C	-18~-23°C	-18~-23°C	-18~-23°C	-18~-23°C	-18~-23°C
Refrigerant	R290a	R290a	R290a	R290a	R290a	R290a	R290a
Volume (L)	350	450	550	650	750	950	1150
Rated/Frequency	220V-240V/50Hz-60Hz / 100V-120V/50Hz-60Hz						
Power(w)	210	220	232	260	260	280	320

Double temperature series ▶

Model	LFBD/BC-550DT	LFBD/BC-750DT
Compact		
Dimension (mm)	1500*760*960	2000*760*960
Cooling system	Direct Cooling	Direct Cooling
Temperature	-18~-23°C/+2~+8°C	-18~-23°C/+2~+8°C
Refrigerant	R290a	R290a
Volume (L)	550	750
Rated/Frequency	220V-240V/50Hz-60Hz / 100V-120V/50Hz-60Hz	
Power(w)	232	260



- * Large space, store more food.
- * Humanized design to meet the needs of different people.
- * Save electricity and save money, save energy and environmental protection.
- * Quiet and impatient, ultra-quiet operation.
- * A multi-purpose machine, a twist control temperature, can freeze a variety of ingredients.

Detail Show ▶



Mechanical Temperature Controller



Handle with lock



Basket



With caster



Chest Freezer ▶



Single Temperature Series ▶

Model	LFBD/BC-398	LFBD/BC-498	LFBD/BC598	LFBD/BC-698	LFBD/BC-798	LFBD/BC-838
Compact						
Dimension (mm)	1130*730*900	1130*730*900	1750*730*900	1970*720*900	2000*780*900	1800*830*900
Cooling system	Direct Cooling	Direct Cooling	Direct Cooling	Direct Cooling	Direct Cooling	Direct Cooling
Temperature	-18~-23°C	-18~-23°C	-18~-23°C	-18~-23°C	-18~-23°C	-18~-23°C
Refrigerant	R290a	R290a	R290a	R290a	R290a	R290a
Volume (L)	358	458	558	658	735	802
Rated/Frequency	220V-240V/50Hz-60Hz					

Model	LFBD/BC-868	LFBD/BC-898	LFBD/BC-998	LFBD/BC-1388	LFBD/BC-1788	LFBD/BC-2088
Compact						
Dimension (mm)	2000*830*900	2150*830*900	2160*905*900	2580*1035*900	3100*1035*900	3600*1175*900
Cooling system	Direct Cooling	Direct Cooling	Direct Cooling	Direct Cooling	Direct Cooling	Direct Cooling
Temperature	-18~-23°C	-18~-23°C	-18~-23°C	-18~-23°C	-18~-23°C	-18~-23°C
Refrigerant	R290a	R290a	R290a	R290a	R290a	R290a
Volume (L)	836	868	935	1316	1754	1875
Rated/Frequency	220V-240V/50Hz-60Hz					



Double temperature series ▶

Model	LFBD/BC-398	LFBD/BC-498	LFBD/BC598	LFBD/BC-698
Compact				
Dimension (mm)	1130*730*900	1450*730*900	1750*730*900	1970*720*900
Cooling system	Direct Cooling	Direct Cooling	Direct Cooling	Direct Cooling
Temperature	-18~-23°C	-18~-23°C	-18~-23°C	-18~-23°C
Refrigerant	R290a	R290a	R290a	R290a
Volume (L)	358	458	558	658
Rated/Frequency	220V-240V/50Hz-60Hz			



- * Large space, store more food.
- * Humanized design to meet the needs of different people.
- * Save electricity and save money, save energy and environmental protection.
- * Quiet and impatient, ultra-quiet operation.
- * A multi-purpose machine, a twist control temperature, can freeze a variety of ingredients.
- * Color: There are two series, grey and white

Detail Show ▶



Mechanical Temperature Controller



Basket



Compressor

* Our Horizontal freezer for promotion has a good adverting display function , the front panel and body also can be printed your color and logo as your design and without fee, so our horizontal freezer is to be the promotion product popular in the ice cream companies and cold food company.

Chest Freezer ▶



● One Door



● Two Doors



● Three Doors

Model	LFHY-298	LFHY-398	LFHY-498	LFHY-598	LFHY-698	LFHY-798	LFHY-898	LFHY-998	LFHY-1580
Compact									
Dimension (mm)	900*600*830	1100*700*850	1410*700*850	1710*700*850	1960*700*850	1960*770*850	2105*820*850	2180*905*850	2600*1020*850
Cooling system	Direct Cooling	Direct Cooling	Direct Cooling	Direct Cooling	Direct Cooling	Direct Cooling	Direct Cooling	Direct Cooling	Direct Cooling
Temperature	-18~-23°C	-18~-23°C	-18~-23°C	-18~-23°C	-18~-23°C	-18~-23°C	-18~-23°C	-18~-23°C	-18~-23°C
Refrigerant	R290a	R290a	R290a	R290a	R290a	R290a	R290a	R290a	R290a
Volume (L)	216	310	412	495	570	627	737	878	1042
Rated/Frequency	220V-240V/50Hz-60Hz								

Detail Show ▶



Handle with lock



Mechanical Temperature Controller



Basket



Large Capacity

- * Good quality compressor make our Horizontal freezer for promotion have good cooling and save energy
- * Copper Tubes for our beverage refrigerator copper tubes with large evaporation area, fast refrigeration, good effect of display and preservation.
- * Our Horizontal freezer for promotion choose electronic thermostat
- * Our standard products are 220V/50HZ, we can customize other power supply according to your requirements.
- * We provide custom-made service for the power supply, plug, logo, size, style, etc.

Ice Cream Cabinet ▶



Model	LF-198XG	LF-328XG	LF-428XG
Compact			
Dimension (mm)	690*650*840	1100*650*870	1300*650*870
Cooling system	Direct Cooling	Direct Cooling	Direct Cooling
Temperature	-18~-23℃	-18~-23℃	-18~-23℃
Refrigerant	R290a	R290a	R290a
Volume (L)	198L	328L	428L
Rated/Frequency	220V-240V/50Hz-60Hz / 100V-120V/50Hz-60Hz		

- * The compressor features low cooling, low noise and high efficiency and energy saving
- * Tempered coated heat-reflective glass door, with excellent insulation effect and good display effect.
- * Aluminum-plastic inner liner, double-sided treatment, with strong adhesion.
- * 290 refrigerant, fast cooling and low temperature drop.
- * It is equipped with a quick-freezing function and is suitable for cooling in high-temperature environments.
- * Electronic temperature control panel, blue light temperature display, precise temperature control

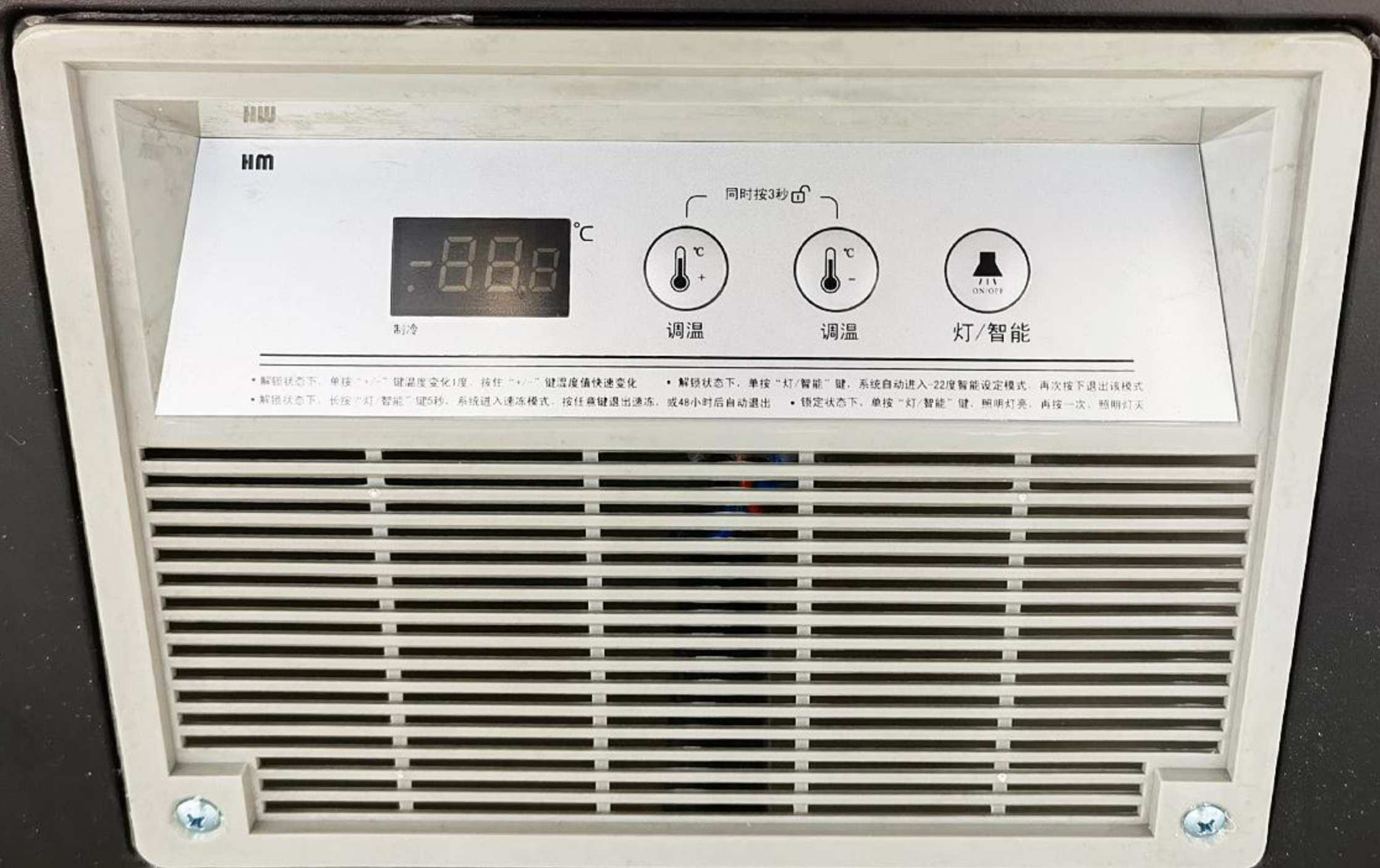


Island Cabinet ▶



Model	LF-358	LF-458	LF-558	LF-658	LF-858	LF-858 (Double temperature)	LF-1058
Size	1260x820x890	1500x820x890	1800x820x890	2000x820x890	2000x1000x890	2000x1000x890	2500x1000x890
Capacity	358L	428L	528L	628L	818L	818L	1018L
Power	192W	232W	260W	280W	384W	384W	420W
Power consumption	2.1kwh/24h	2.9kwh/24h	3.2kwh/24h	3.8kwh/24h	4.2kwh/24h	4.2kwh/24h	4.5kwh/24h
Freezing capacity	18kg	24kg	28kg	32kg	42kg	42kg	46kg
Temperature range	-20°C	-20°C	-20°C	-20°C	-20°C	-20°C	-20°C
Weight	67kg	80kg	91kg	101kg	122kg	122kg	146kg

- * It is equipped with LED lights inside, providing a strong display effect.
- * Titanium alloy cabinet openings, high-end and elegant.
- * 290 refrigerant, fast cooling and low temperature drop.
- * The glass door is equipped with multiple casters, which is light, smooth and reduces the wear rate.
- * Electronic temperature control panel, blue light temperature display, precise temperature control, adjustable cold storage and freezing, intelligent and convenient, worry-free and power-saving.

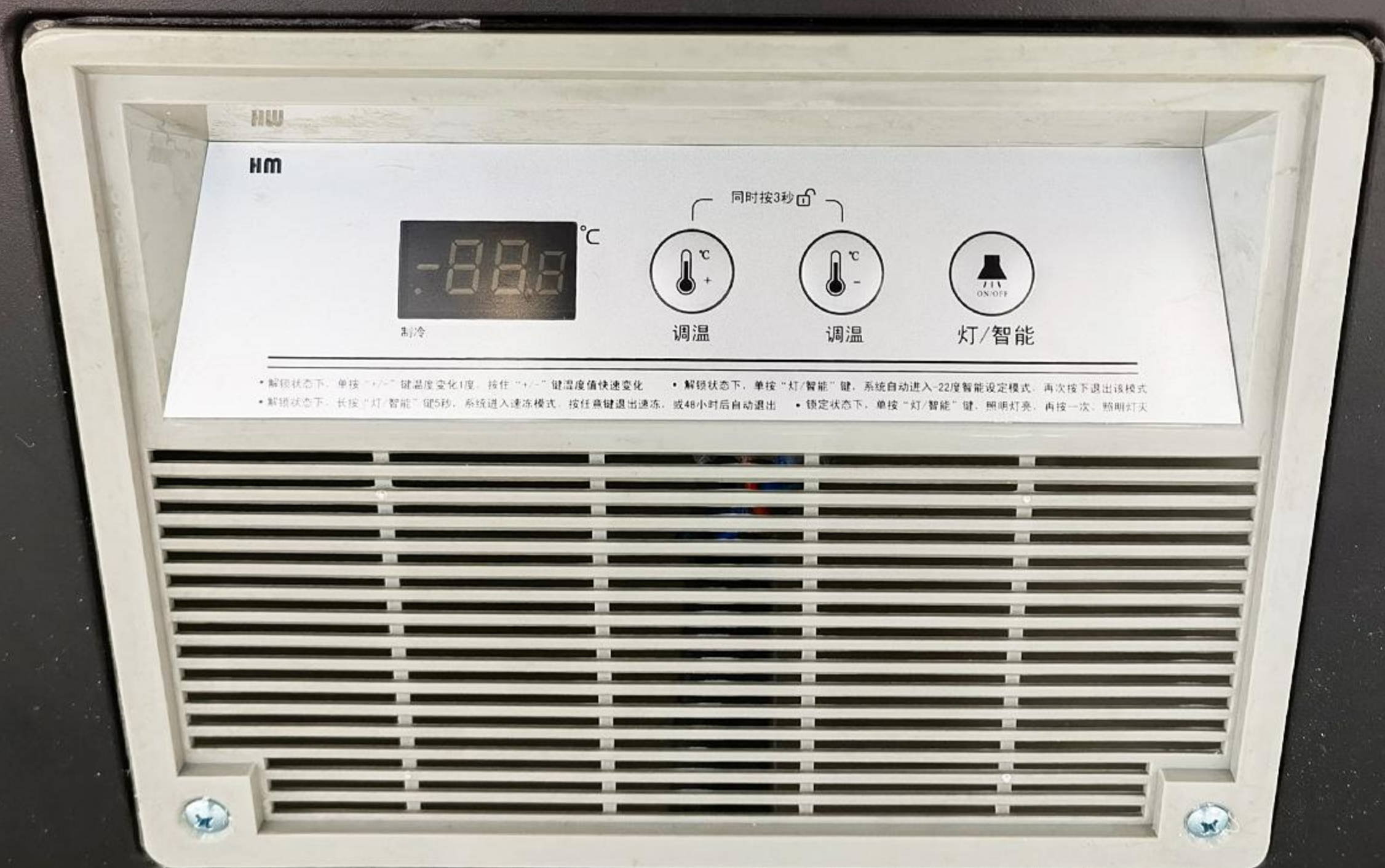


Island Cabinet ▶



Model	LF-1500	LF-1800	LF-2000	LF-2000 (Dual machines)	LF-2500 (Dual machines)
Size	1500x820x890	1800x820x890	2000x820x890	2000x1000x890	2500x1000x890
Capacity	570L	690L	790L	990L	1290L
Power	280W	290W	300W	384W	420W
Power consumption	3.8kwh/24h	3.8kwh/24h	4.4kwh/24h	4.4kwh/24h	4.5kwh/24h
Freezing capacity	32kg/24h	32kg/24h	32kg/24h	32kg/24h	46kg/24h
Temperature range	-18°C	-18°C	-18°C	-18°C	-18°C
Weight	92kg	104kg	114kg	122kg	146kg

- * The cabinet opening is made of titanium alloy, which is high-end and elegant.
- * High-brightness led lights provide a strong display effect.
- * Aluminum-plastic inner liner, corrosion-resistant, has a longer service life than embossed aluminum inner liner.
- * It is equipped with an internal encrypted net basket and a partition board.
- * Tempered coated heat-reflective glass door, with excellent heat preservation effect.
- * Electronic temperature control panel, blue light temperature display, precise temperature control, adjustable cold storage and freezing, intelligent and convenient, worry-free and power-saving.

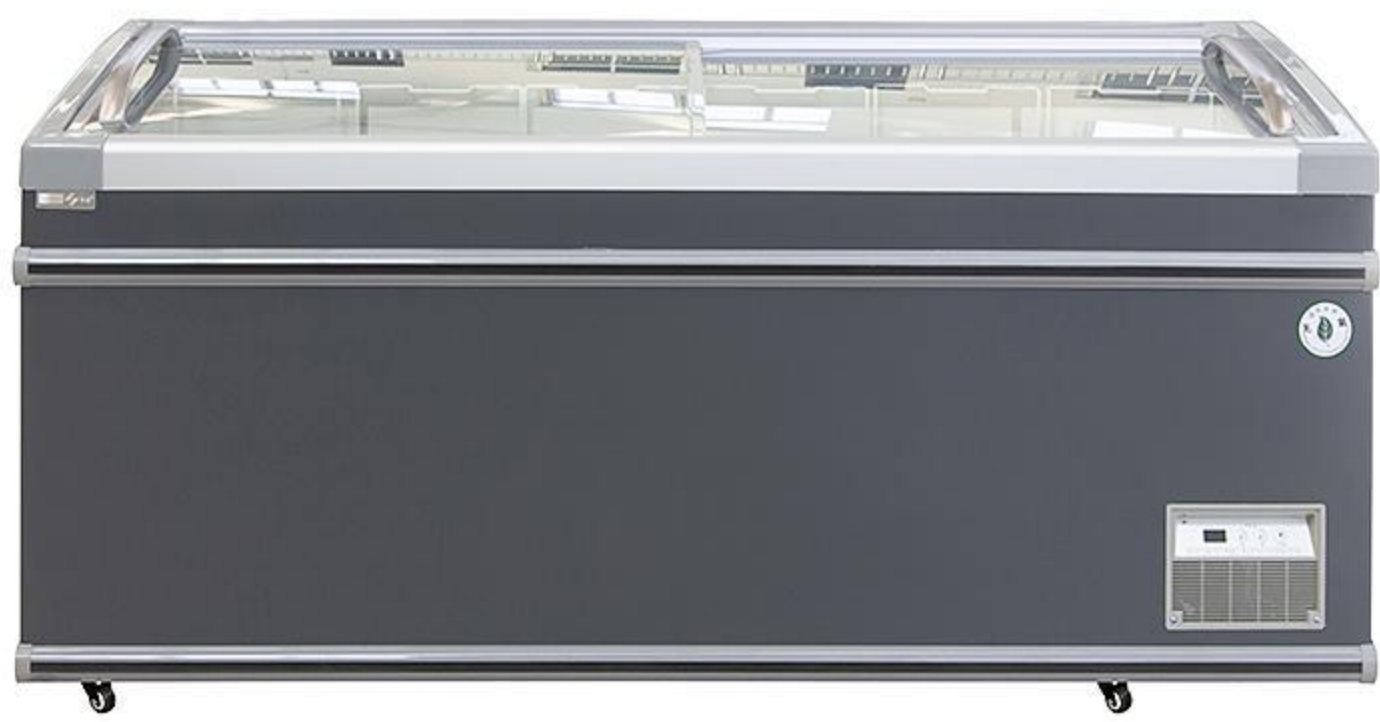


Supermarket Combination Display Cabinet





Supermarket Combination Display Cabinet



● Front



● Side



● Above

Model	LF-400 (Combination cabinet)	LF-600 (End socket)	LF-700 (Combination cabinet)	LF-800 (Combination cabinet)
Size	1260x815x835	1865x815x770	1865x815x835	2104x815x835
Capacity	400L	600L	700L	800L
Power	200W	280W	280W	280W
Colour	White/Grey/coffee	White/Grey/coffee	White/Grey/coffee	White/Grey/coffee
Temperature range	-20°C	-20°C	-20°C	-20°C
Weight	85kg	99kg	100kg	105kg

- * The cabinet opening is made of alloy material
- * It uses a large stainless steel handle, which is durable.
- * led lights have a strong display effect
- * The aluminum-plastic thickened inner liner is corrosion-resistant and has a longer service life than the embossed aluminum inner liner.
- * Equipped with an internal encrypted net basket partition
- * Tempered coated heat-reflective glass doors have excellent heat preservation effects

Supermarket Arc-shaped Combination Display Cabinet



Model	LF-1.6m (End socket)	LF-500 (Luxury arc cabinet)	LF-600 (Luxury arc cabinet)	LF-700 (Luxury arc cabinet)
Size	1650x760x860	1500x760x860	1800x760x860	2000x760x860
Capacity	560L	500L	600L	700L
Power	232W	232W	300W	380W
Colour	White/Grey/coffee	White/Grey/coffee	White/Grey/coffee	White/Grey/coffee
Temperature range	-20°C	-20°C	-20°C	-20°C
Weight	80kg	90kg	97kg	118kg

* Stainless steel cabinet opening, high-end and elegant.

* led lights have a strong display effect and meet users' display needs for displayed food.

* The aluminum-plastic thickened inner liner is corrosion-resistant and has a longer service life than the embossed aluminum inner liner.

* Arc-shaped glass has a better display effect.

* It is equipped with an internal encrypted net basket, which is convenient for users to clearly display food by category.

* Tempered coated heat-reflective glass door, with excellent heat preservation effect and good display effect.

* Electronic temperature control panel, blue light temperature display, precise temperature control, adjustable for both refrigeration and freezing, intelligent and convenient, worry-free and power-saving.

Supermarket Combination Display Cabinet



Model	End Socket	Fixed Shelf			
Size	1960*880*890	1500*880*890	1900*880*890	2100*880*890	2500*880*890
Temperature range	-18℃— -22℃	-18℃— -22℃	-18℃— -22℃	-18℃— -22℃	-18℃— -22℃
Refrigeration system	Direct cooling	Direct cooling	Direct cooling	Direct cooling	Direct cooling
Rated/Frequency	220V-240V/50Hz-60Hz	220V-240V/50Hz-60Hz	220V-240V/50Hz-60Hz	220V-240V/50Hz-60Hz	220V-240V/50Hz-60Hz
Refrigerant	R290a	R290a	R290a	R290a	R290a



Cake Showcase



Model	LFZ-58L	LFZ-68L	LFZ-78L	LFZ-98L	LFZ-218L	LFZ-238L	LFZ-278L
Size (mm)	447*400*819	447*400*894	447*400*969	447*400*1119	515*485*1615	515*485*1715	515*485*1915
Temperature	+2~+8°C/35.6-46.4°F	+2~+8°C/35.6-46.4°F	+2~+8°C/35.6-46.4°F	+2~+8°C/35.6-46.4°F	+2~+8°C/35.6-46.4°F	+2~+8°C/35.6-46.4°F	+2~+8°C/35.6-46.4°F
Refrigerant	R600a	R600a	R600a	R600a	R600a	R600a	R600a
Weight	30kg	33kg	35kg	39kg	77kg	80kg	93kg
Volume	58L	68L	78L	98L	218L	238L	278L
Color	White/Black	White/Black	White/Black	White/Black	White/Black	White/Black	White/Black



*Stable refrigeration system: Customized refrigeration system with high stability and efficiency.

*Main material: Customized high-density food grade acrylic, fashionable and high-end

*Good cooling effect: Internal self circulating air cooling, air outlet installed on the glass side, insulation and defogging to improve the cooling efficiency of the compressor.

*Certification: ISO, CE, CB, LVD, EMC, ROHS, UL.ETL

*Testing: Conduct comprehensive system testing using independent equipment testing laboratories and precision testing equipment.



Cake Showcase



LFCS-02W



LFCS-02B

Product Name	Cake Cabinet	
Dimension (mm)	700*580*744	900*580*744
Temperature	+2~+8°C	+2~+8°C
Refrigerant	R290a	R290a
Rated/Frequency	220V-240V/50Hz-60Hz	220V-240V/50Hz-60Hz
Cooling system	Air Cooling	Air Cooling
Color	White/Black	White/Black



Cake Showcase



LFCS-01

Product Name	Cake Cabinet	
Dimension (mm)	700*580*700	900*580*700
Temperature	+2~+8°C	+2~+8°C
Refrigerant	R290a	R290a
Rated/Frequency	220V-240V/50Hz-60Hz	220V-240V/50Hz-60Hz
Cooling system	Air Cooling	Air Cooling
Color	White/Black	White/Black



Black Front-opening countertop deli cabinet unit



LFD-01A



Product Name	Front-opening countertop deli cabinet unit				
Dimension (mm)	1000*1050*1200	1300*1050*1200	1500*1050*1200	2000*1050*1200	2500*1050*1200
Temperature	+3~-3°C	+3~-3°C	+3~-3°C	+3~-3°C	+3~-3°C
Refrigerant	R290a	R290a	R290a	R290a	R290a
Rated/Frequency	100V-120V/60Hz	100V-120V/60Hz	100V-120V/60Hz	100V-120V/60Hz	100V-120V/60Hz



- * High-quality energy-saving compressor, guaranteed quality, stable performance.
- * LED lighting design, energy-saving, excellent display effect.
- * Thick insulation layer, more heat-insulating and power-saving than similar products.
- * Use of key components from internationally renowned brands to ensure more stable and reliable product operation.
- * Stainless steel bottom, screwless design, corrosion-resistant, prolongs service life, more durable.
- * Integrated machine adopts pre-cooling technology, energy-saving, convenient, stable.
- * Front LOW-E glass, large arc-shaped glass design, beautiful and luxurious, enhances display effect.
- * Unique external fan design, prevents condensation on the outer layer of the glass.
- * Front door uses imported hydraulic support rods, durable, excellent elasticity and stability.

White Front-opening countertop deli cabinet unit



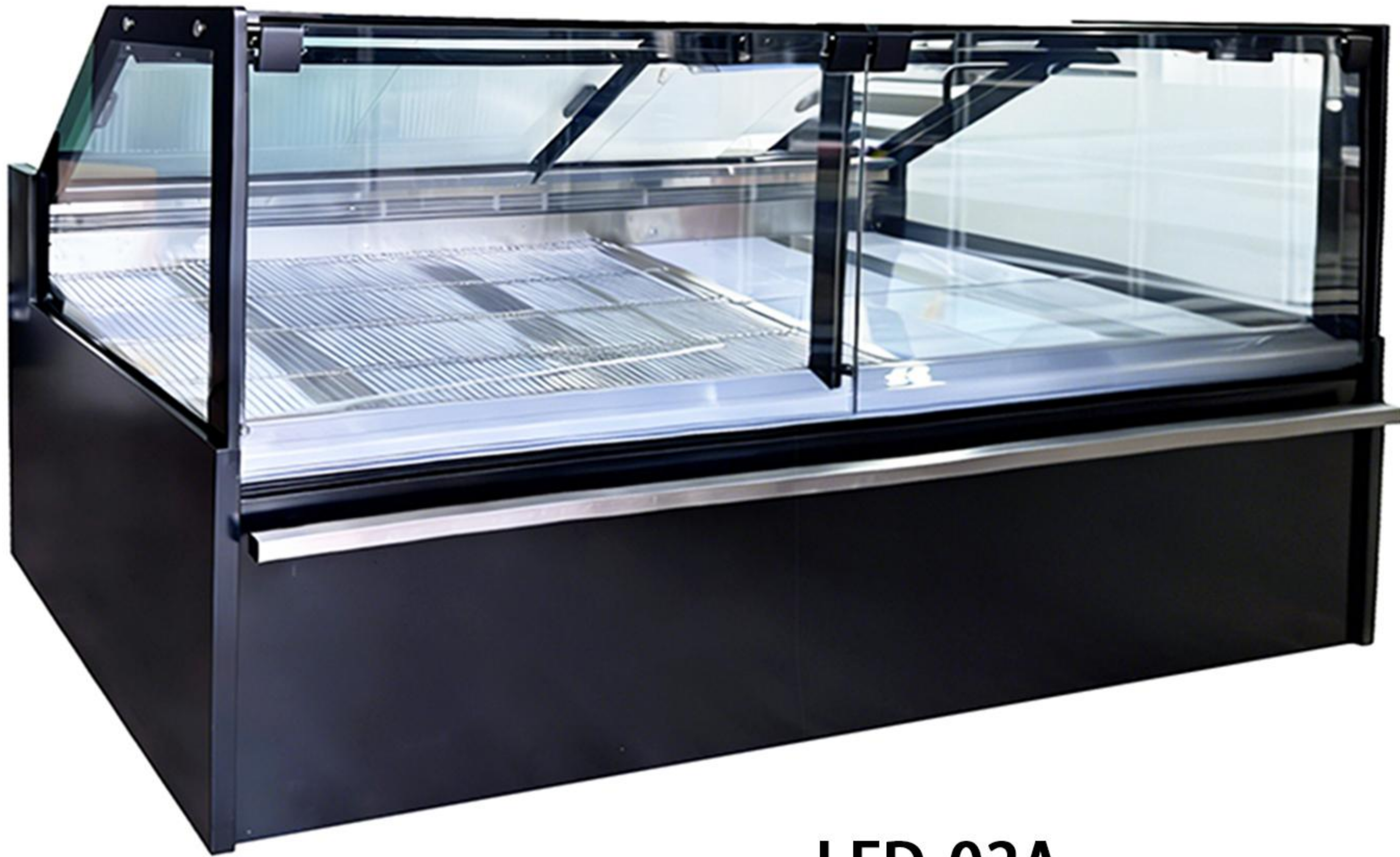
LFD-01B



Product Name	Front-opening countertop deli cabinet unit				
Dimension (mm)	1000*1050*1200	1300*1050*1200	1500*1050*1200	2000*1050*1200	2500*1050*1200
Temperature	+3~-3°C	+3~-3°C	+3~-3°C	+3~-3°C	+3~-3°C
Refrigerant	R290a	R290a	R290a	R290a	R290a
Rated/Frequency	100V-120V/60Hz	100V-120V/60Hz	100V-120V/60Hz	100V-120V/60Hz	100V-120V/60Hz



A model inverted-style ready-to-eat food cabinet



LFD-02A

Product Name	Front-opening countertop deli cabinet unit				
Dimension (mm)	1330*1150/1050*1250	1955*1150/1050*1250	2580*1150/1050*1250	2980*1150/1050*1250	3830*1150/1050*1250
Temperature	+3~-3°C	+3~-3°C	+3~-3°C	+3~-3°C	+3~-3°C
Refrigerant	R290a	R290a	R290a	R290a	R290a
Rated/Frequency	220V~240V/50Hz	220V~240V/50Hz	220V~240V/50Hz	220V~240V/50Hz	220V~240V/50Hz

*Front flip-up glass, rear acrylic sliding door

*With plastic water collection tray

*Color: Standard exterior color, inner 201 stainless steel

*LED lighting design, energy-saving, excellent display effect.



Split Air Curtain Cabinet



External Dimensions

LFSA-1

1250*900*2050
1500*900*2050
1875*900*2050
2500*900*2050
2900*900*2050
3000*900*2050
3750*900*2050

- * The unique 36 tube copper evaporator design features a large evaporation area and rapid cooling
- * The R22 external balance Danfoss expansion valve is adopted
- * 201 stainless steel bottom of the cabinet, preventing the bottom from rotting
- * Digital display Jingchuang temperature controller, featuring dual high and low probes
- * 0.8mm powder coated laminated board, anti rust, resistant to heavy pressure without deformation
- * Single wire single end connection to the lamp tube makes it more convenient to damage the lamp tube
- * Independent dual-control light switch ensuring both lighting and energy conservation
- * The air outlet is designed with electric heating and continuous cooling to prevent condensation
- * The bearings are equipped with casters for easy movement
- * Tempered glass, strong and not easy to break
- * Silent fan, with high wind speed, fast cooling and low noise





External Dimensions

LFSA-2

1330*750*1960

1955*750*1960

2580*750*1960

2980*750*1960

1580*900*2050

2080*900*2050

- * R404 external balance Danfoss expansion valve
- * 36-tube copper evaporator
- * Tempered glass, 201 stainless steel bottom of the boat
- * Anti-slip layer board
- * Digital display Jingchuang temperature controller
- * Independent shelf and ceiling light control switch
- * Electric heating dehumidification at the air outlet
- * The base feet are equipped with installation casters and screw support feet
- * Blue Ocean Boyang Unit

